

Smart and Efficient Application Delivery Management



Enabling Effective Management of Business-Smart Networks - Resilience, Efficiency and Agility

Deploying and managing a globally distributed application delivery fabric can be complicated. The operating costs of multiple application delivery services must be minimized, changes must be deployed consistently and the availability, performance and security of the infrastructure must be measured. You need tools to enable early detection of end-user, application, and network problems and then quickly to alert you of those issues that need attention. The key to minimizing impact is to restore operations quickly.

Radware APSolute™ Vision provides a single point of access for network and application teams to centrally manage distributed Radware application delivery services and monitor the health, real-time status, performance and security of application delivery infrastructures.

Centralized Application Delivery Fabric Management

APSolute Vision consolidates the management of up to 1000 Radware application delivery services of different types, and form factors across the application delivery fabric. Through this unification of the management interface, APSolute Vision greatly simplifies the provisioning of new application delivery services.

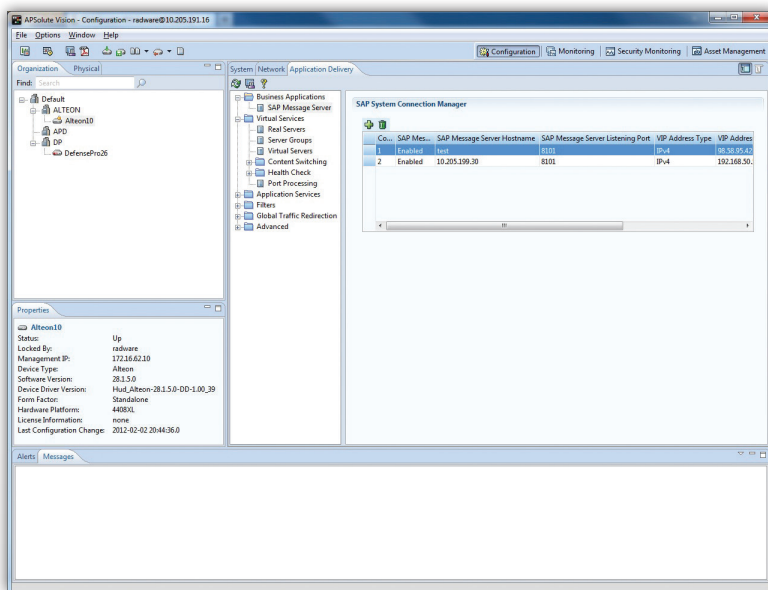
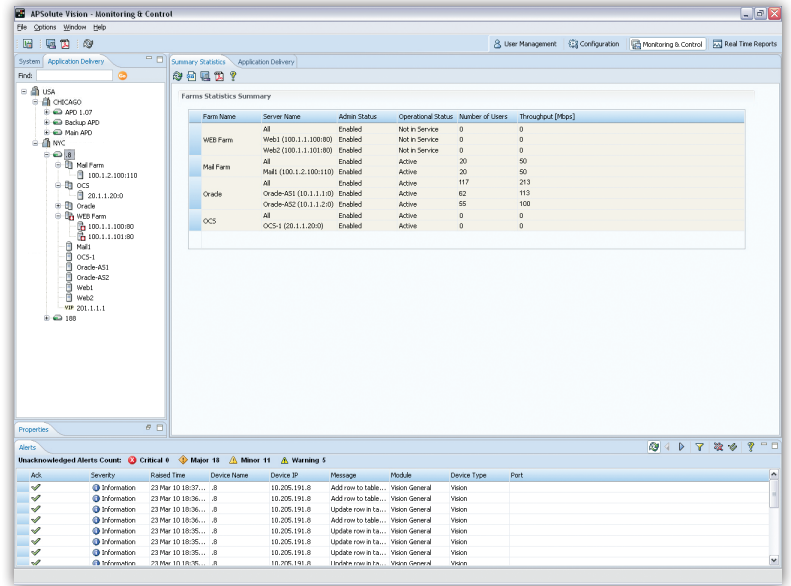
To manage robust application delivery fabrics, APSolute Vision supports full role based access control capabilities, allowing delegating the management of application delivery services amongst different business and IT groups.

It supports all element management aspects: initial device setup, ongoing maintenance, automated device configuration backup, SSL certificate management, and more. In addition, it provides central storage of vital device information, allowing IT managers to easily find hardware platform details, software versions, installed licenses, etc - eliminating manual tracking of critical device information, and reducing errors.

Maximized Application Delivery Fabric Reliability

APSoIute Vision supports a robust reporting engine, which provides real-time and historical performance reporting capabilities, trends analysis, and capacity planning capabilities. This ensures continuous monitoring and alerting for any degradation of business continuity or performance of the whole ADC fabric, whether it is located in a single data center or spans multiple data center. This provides the following benefits:

- Real-time business application performance monitoring
- Up-to-date information, and improved service business continuity
- Effective application delivery capacity planning
- Shorter time frame required to resolve business continuity issues
- Minimized impact of service downtime on the enterprise's business



Streamlined Business Application Deployment

For organizations wishing to provide application delivery services for their business applications, APSoIute Vision provides specifically tailored AppShape templates.

AppShape templates encompass the complete configuration required from an application delivery service to correctly optimize leading business applications in a user friendly format, including application server information, specific application health checks and redundancy options.

AppShape templates can be applied to multiple application delivery services, greatly reducing maintenance windows and removing the need for manual configuration updates APSoIute Vision offers AppShape templates for leading business applications such as Microsoft Exchange, Microsoft SharePoint, Microsoft Lync, Oracle E-Business Suite, Oracle 10g, PeopleSoft, SAP ERP and more.

Tight Integration with Enterprise's Data Center NMS

APSolute Vision is designed to tightly integrate with enterprise data center's network operation centers (NOC) and the network management systems (NMS) used by the NOC operators. Information can be sent by APSolute Vision via emails and Syslog events.

Full Management Server Resiliency

To ensure the highest levels of resiliency for the management server, APSolute Vision supports periodically backing up the data stored on the internal storage and storing it on an external storage system.

In addition, APSolute Vision supports high availability (HA) deployments, ensuring that a failure of the management server does not prevent the continued management of the application delivery fabric.

Full Alert Lifecycle Management

APSolute Vision provides IT managers with a rich set of tools to manage all alerts (availability, performance, security, and more) within their infrastructure. Alerts are managed from the moment they occur (identification stage), through ticket opening, analysis, resolution, verification stages and up to the point where the problem is resolved and summarized. This ensures complete alignment to enterprise and NOC business processes.

Supported Device Versions

Product	Version
AppDirector	2.14, 2.3x and above
Alteon	28.1 and above
Alteon VA	28.1 and above

APSolute Vision Hardware Specifications

Processor	Q9400 Intel Quad 2.6Ghz
Memory	8GB
Copper Gigabit Ethernet Ports	2
RS-232C Console	RJ-45 serial connection
Hard Drive	500GB
Dimensions	<ul style="list-style-type: none">• Width: 424 mm (17 in.)• Depth: 457 mm (18 in.)• Height: 44 mm (1.7 in.)• EIA Rack or Standalone: 482 mm (19 in.)
Weight	7.6 kg (16.8 lbs)
Operating Temperature	0°C to 40°C (32°F to 104°F)
Relative Humidity	5% to 95% non-condensing
Maximum Power Consumption	168W
Maximum Heat Output	573 BTU
Input Voltage	AC: 100-240V 47-63Hz
Certifications	<ul style="list-style-type: none">• Safety: EN 60950-1:2006, CB - IEC 60950-1, CCC, cTUVus/cULus• EMC: CE - EN 55022, EN 55024, EN 61000-3-2, EN 61000-3-3, IEC 61000 4-2 to 4-6, IEC 61000 4-8 & IEC 61000-4-11, FCC Part 15B Class A, ICES-003, VCCI, C-Tick• RoHS 6

APbsolute Vision VA (Virtual Appliance) Specifications

Virtual Appliance Type	APbsolute Vision VA – Demo	APbsolute Vision VA – Full Size
Supported Hypervisor	VMware vSphere ESX4.1 or 5.1	VMware vSphere ESX4.1 or 5.1
Processor	2 vCPUs	4 vCPUs
Memory	4GB	8GB
Hard Drive	50GB HD	250GB HD
Networking	3 vNICs	3 vNICs

About Radware

Radware, the global leader in integrated application delivery solutions, assures the complete availability, performance and security of business-critical applications for nearly 10,000 enterprises and carriers worldwide. With Radware's comprehensive and award-winning suite of products, companies can drive business productivity, improve profitability, and reduce IT operating and infrastructure costs by making their networks "business-smart."

Certainty Support

Radware offers technical support for all of its products through the Certainty Support Program. Each level of the Certainty Support Program consists of four elements: phone support, software updates, hardware maintenance, and on-site support. Radware also has dedicated engineering staff that can assist customers on a professional services basis for advanced project deployments.

Learn More

To learn more about Radware Alteon application delivery products please visit us at www.radwarealtheon.com. For information regarding Radware's entire portfolio of application delivery and network security products for business-smart networking, please visit www.radware.com.